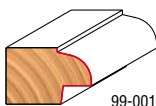


# Door Lip Bit

- Produces classical door lips on stock from 1/2" to 1 1/4" in thickness.

## Application:

- Cuts all composition materials, plywood, hardwood and soft wood.
- Use on table-mounted portable routers.



99-001



Item Number	Overall Dia.	Cut Depth	Carbide Height	Minor Height	Large Radius	Angle	Shank Dia.	Overall Length
99-001	2"	29/64"	1 1/4"	1 1/16"	3/8"	7°	1/2"	2 3/4"

# No Lip Door Edge Bit

- Adds a decorative inverted Ogee Profile on the face of door fronts.
- Designed to compliment the profile formed on the face of the door created by the 99-064 Finger Pull door Edge Bit.
- Precise shear angles provide a splinter-free finish.

## Application:

- Cuts all composition materials, plywood, hardwood and soft wood.
- Use on hand-held and table-mounted portable routers.



99-063



Item Number	Overall Dia.	Carbide Height	Large Radius	Small Radius	Shank Dia.	Overall Length
99-063	1 3/4"	5/8"	3/32"	5/32"	1/2"	2 5/8"

NEW

63

# Finger Pull Door Lip Bit

- Produces the finger pull groove found on popular contemporary cabinet doors.

## Application:

- Cuts all composition materials, plywood, hardwood and soft wood.
- Use on table-mounted portable routers.



99-064



Item Number	Overall Dia.	Small Dia.	Carbide Height	Large Radius	Angle	Shank Dia.	Overall Length
99-064	1 3/4"	5/8"	1 3/16"	—	—	1/2"	2 5/8"
99-065	2"	3/4"	1 1/4"	1/4"	25°	1/2"	2 3/4"

NEW

99-065



# Drawer Front Bit

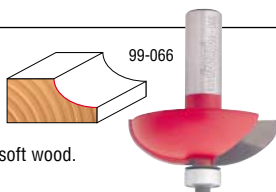
- Adds a decorative "raised panel" look to drawer fronts.
- Precise shear angles provide a splinter-free finish.

## Application:

- Cuts all composition materials, plywood, hardwood and soft wood.
- Use on hand-held and table-mounted portable routers.



99-066



Item Number	Overall Dia.	Carbide Height	Large Radius	Shank Dia.	Overall Length
99-066	2"	9/16"	29/32"	1/2"	2 3/8"

# Router Bit Sets

Whether you're a novice or a professional woodworker, Freud offers a router bit set that meets your needs. Choose from more than 35 sets, each offering the ability to create numerous profiles and projects. For your convenience, each Freud router bit set includes an attractive wooden storage box.

# Five Piece Introductory Bit Set

- This four piece set transforms to five pieces by using a bearing to convert the beading bit into a round over bit.
- Includes a flush trim, straight, roman ogee and beading bit.
- All bits have 1/4" shanks.
- Includes attractive wooden storage box.



### Application:

- Cuts all composition materials, plywood, hardwood, and soft wood.
- Use on hand-held and table-mounted portable routers.

### Item Number 88-104

Bit Type	Item Number	Shank Dia.	Page Number
Bearing Flush Trim Bit	42-104	1/4"	11
Double Flute Straight Bit	04-108	1/4"	5
Roman Ogee Bit	38-100	1/4"	28
Beading Bit	36-114	1/4"	25
*Rounding Over Bit	34-114	1/4"	24



88-104

\*Use included bearing #62-104 to convert 36-114 Beading Bit into 34-114 Rounding Over Bit.

# Five Piece Introductory Bit Set

65

- Freud's new Five Piece Introductory Set provides an economical yet very useful introduction to the wide world of possibilities offered by your 1/2" collet router.
- Includes a variety of bits that allow you to experience several router functions.
- All bits have 1/2" shanks.
- Set comes in Freud's unique shadow box case, this set hangs on the wall or mounts on the bench to keep bits handy and safe.



91-103

### Application:

- Cuts all composition materials, plywood, hardwood, and soft wood.
- Use on hand-held and table-mounted portable routers.

### Item Number 91-103

Bit Type	Item Number	Shank Dia.	Page Number
Bearing Flush Trim Bit	42-110	1/2"	11
Double Flute Straight Bit	12-100	1/2"	5
Roman Ogee Bit	38-104	1/2"	28
Rounding Over Bit	34-124	1/2"	24
*Beading Bit	36-124	1/2"	25

NEW

\*Use included bearing #62-104 to convert 34-124 Rounding Over Bit into 36-124 Beading Bit.

# Nine Piece Basic Bit Set



New  
Shadow  
Box

91-108

Routing Tips & Techniques



- Ideal starter set for the beginning woodworker.
- Includes a variety of bits that allow you to experience several router functions.
- Set 88-100, with 1/4" shank bits, includes an attractive wooden storage box.
- Sets 91-108, with 1/2" shank bits, comes in Freud's unique shadow box case, this set hangs on the wall or mounts on the bench to keep bits handy and safe.

#### Application:

- Cuts all composition materials, plywood, hardwood, and soft wood.
- Use on hand-held and table-mounted portable routers.

#### Item Number 88-100 (9 pc. 1/4" Shank Set)

Bit Type	Item Number	Shank Dia.	Page Number
Double Flute Straight Bit*	04-104	1/4"	5
Double Flute Straight Bit	04-124	1/4"	5
Mortising Bit	16-100	1/4"	10
Dovetail Bit	22-104	1/4"	41
Rabbeting Bit	32-100	1/4"	42
Rounding Over Bit	34-110	1/4"	24
Roman Ogee Bit	38-100	1/4"	28
Bearing Flush Trim Bit	42-102	1/4"	11
Panel Pilot Bit*	70-100	1/4"	10

NEW

#### Item Number 91-108 (9 pc. 1/2" Shank Set)

Bit Type	Item Number	Shank Dia.	Page Number
Double Flute Straight Bit	12-116	1/2"	5
Double Flute Straight Bit	12-108	1/2"	5
Mortising Bit	16-100	1/2"	10
Dovetail Bit	22-112	1/2"	41
Rabbeting Bit	32-102	1/2"	42
Rounding Over Bit	34-120	1/2"	24
Roman Ogee Bit	38-106	1/2"	28
Bearing Flush Trim Bit	42-109	1/2"	11
"V" Grooving Bit	20-108	1/2"	18

\*Solid Carbide

# Five Piece Up Spiral Bit Set

- Use the Up Spiral Bit Set for mortises, dado cuts, and deep blind holes where chips must be pulled out of the cut, and where the speed of cut is the primary consideration.
- Set comes in Freud's unique shadow box case, this set hangs on the wall or mounts on the bench to keep bits handy and safe.



90-150

## Application:

- Cuts all composition materials, plywood, hardwood, and soft wood.
- Use on CNC and other automatic routers as well as hand-held and table-mounted portable routers.

## Item Number 90-150

NEW

Bit Type	Dia.	Item Number	Shank Dia.	Page Number
Up Spiral Bit*	3/16"	75-101	1/4"	7
Up Spiral Bit*	1/4"	75-102	1/4"	7
Up Spiral Bit*	5/16"	75-104	1/2"	7
Up Spiral Bit*	3/8"	75-106	1/2"	7
Up Spiral Bit*	1/2"	75-108	1/2"	7

\*Solid Carbide

67

# Five Piece Down Spiral Bit Set

- The Down Spiral Bit Set is ideal choice for grooves and dados in delicate materials and laminates, or any application where chip removal is not a concern.
- Set comes in Freud's unique shadow box case, this set hangs on the wall or mounts on the bench to keep bits handy and safe.



90-160

## Application:

- Cuts all composition materials, plywood, hardwood, and soft wood.
- Use on CNC and other automatic routers as well as hand-held and table-mounted portable routers.

## Item Number 90-160

NEW

Bit Type	Dia.	Item Number	Shank Dia.	Page Number
Down Spiral Bit*	3/16"	76-101	1/4"	8
Down Spiral Bit*	1/4"	76-102	1/4"	8
Down Spiral Bit*	5/16"	76-104	1/2"	8
Down Spiral Bit*	3/8"	76-106	1/2"	8
Down Spiral Bit*	1/2"	76-108	1/2"	8

\*Solid Carbide

# Four Piece Undersized Plywood Bit Set



89-650

**New Shadow Box**

- Routs perfectly fitted grooves and dadoes.
- Designed to cut today's undersized plywood; ideal for 1/4" to 3/4" plywood.
- Set 90-106 has 1/4" shanks and set 90-106 has 1/2" shanks.
- Sets comes in Freud's unique shadow box case, this set hangs on the wall or mounts on the bench to keep bits handy and safe.

### Application:

- Cuts all composition materials, plywood, hardwood, and soft wood.
- Use on hand-held and table-mounted portable routers.

### Item Number 90-106 (4 pc. 1/4" Shank Set)

Bit Type	Dia.	Item Number	Shank Dia.	Page #
Double Flute Straight Bit*	7/32"	04-111	1/4"	6
Mortising Bit	23/32"	16-103	1/4"	10
Mortising Bit	11/32"	16-096	1/4"	10
Mortising Bit	15/32"	16-098	1/4"	10

**NEW**

### Item Number 89-650 (4 pc. 1/2" Shank Set)

Bit Type	Dia.	Item Number	Shank Dia.	Page #
Down Shear Mortising Bit	7/32"	16-094	1/2"	10
Down Shear Mortising Bit	11/32"	16-107	1/2"	10
Down Shear Mortising Bit	15/32"	16-109	1/2"	10
Down Shear Mortising Bit	23/32"	16-116	1/2"	10

\*Solid carbide

# 15 Piece Advanced Bit Set



90-100

**New Shadow Box**

- Offers a variety of useful bits, from "V" grooving to flush trimming to chamfering and dovetailing.
- All bits have 1/4" shanks.
- Set comes in Freud's unique shadow box case, this set hangs on the wall or mounts on the bench to keep bits handy and safe.

### Application:

- Cuts all composition materials, plywood, hardwood, and soft wood.
- Use on hand-held and table-mounted portable routers.

### Item Number 90-100

Bit Type	Item Number	Shank Dia.	Page Number
Double Flute Straight Bit*	04-106	1/4"	5
Double Flute Straight Bit	04-140	1/4"	5
Mortising Bit	16-100	1/4"	10
Round Nose Bit*	18-104	1/4"	17
"V" Grooving Bit	20-104	1/4"	18
Dovetail Bit	22-104	1/4"	41
One Flute Panel Pilot Bit	26-100	1/4"	15
Cove Bit	30-106	1/4"	24
Rabbeting Bit	32-100	1/4"	42
Rounding Over Bit	34-114	1/4"	24
Roman Ogee Bit	38-100	1/4"	28
Chamfer Bit	40-106	1/4"	34
Bearing Flush Trim Bit	42-106	1/4"	11
Flush Trim Bit*	64-100	1/4"	12
Bevel Trim Bit*	66-100	1/4"	13

\*Solid carbide



# 26 Piece Artisan Bit Set

- Truly the best set for professional and serious woodworkers.
- Offers the craftsman a wide range of bits, including: "V" grooving, round over, roman ogee, flush trim, chamfer and many other popular profiles.
- Set comes in Freud's unique shadow box case, this set hangs on the wall or mounts on the bench to keep bits handy and safe.

**New  
Shadow  
Box**



92-100

## Application:

- Cuts all composition materials, plywood, hardwood, and soft wood.
- Use on hand-held and table-mounted portable routers.

## Item Number 92-100

Bit Type	Item Number	Shank Dia.	Page Number
Double Flute Straight Bit*	04-100	1/4"	5
Double Flute Straight Bit*	04-106	1/4"	5
Double Flute Straight Bit*	04-108	1/4"	5
Double Flute Straight Bit	04-140	1/4"	5
Mortising Bit	16-100	1/4"	10
Round Nose Bit*	18-104	1/4"	17
Round Nose Bit	18-106	1/4"	17
"V" Grooving Bit	20-100	1/4"	18
"V" Grooving Bit	20-104	1/4"	18
Dovetail Bit	22-104	1/4"	41
Panel Pilot Bit	26-100	1/4"	15
Cove Bit	30-102	1/4"	22
Cove Bit	30-106	1/4"	22
Rabbeting Bit	32-100	1/4"	42
Rounding Over Bit	34-110	1/4"	24
Rounding Over Bit	34-114	1/4"	24
Beading Bit	36-110	1/4"	25
Beading Bit	36-114	1/4"	25
Roman Ogee Bit	38-100	1/4"	28
Roman Ogee Bit	38-102	1/4"	28
Chamfer Bit	40-106	1/4"	34
Bearing Flush Trim Bit	42-100	1/4"	11
Bearing Flush Trim Bit	42-104	1/4"	11
Bearing Flush Trim Bit	42-106	1/4"	11
Flush Trim Bit*	64-100	1/4"	12
Bevel Trim Bit*	66-100	1/4"	13

\*Solid Carbide



69

# Six Piece Starter Bit Set

- Ideal for the beginning woodworker.
- Variety of profiles allows the novice to be very creative with a minimum investment.
- All bits have 1/2" shanks.
- Sets comes in Freud's unique shadow box case, this set hangs on the wall or mounts on the bench to keep bits handy and safe.

## Application:

- Cuts all composition materials, plywood, hardwood, and soft wood.
- Use on hand-held and table-mounted portable routers.

**New  
Shadow  
Box**



91-104

## Item Number 91-104

Bit Type	Item Number	Shank Dia.	Page Number
Round Nose Bit	18-116	1/2"	17
Cove Bit	30-114	1/2"	22
Rabbeting Bit	32-102	1/2"	42
Rounding Over Bit	34-124	1/2"	24
Roman Ogee Bit	38-106	1/2"	28
Chamfer Bit	40-114	1/2"	34



Router Bit Sets

**freud**

# 13 Piece Super Bit Set



91-100

- Consists of a variety of woodworkers' favorite bits: including "V" grooving, flush trimming, chamfering and dovetailing.
- All bits have 1/2" shanks.
- Set comes in Freud's unique shadow box case, this set hangs on the wall or mounts on the bench to keep bits handy and safe.

### Application:

- Cuts all composition materials, plywood, hardwood, and soft wood.
- Use on hand-held and table-mounted portable routers.



### Item Number 91-100

Bit Type	Item Number	Shank Dia.	Page Number
Double Flute Straight Bit	12-100	1/2"	5
Double Flute Straight Bit	12-116	1/2"	5
Double Flute Straight Bit	12-152	1/2"	6
Mortising Bit	16-110	1/2"	10
Round Nose Bit	18-114	1/2"	17
"V" Grooving Bit	20-108	1/2"	18
Dovetail Bit	22-112	1/2"	41
Cove Bit	30-114	1/2"	22
Rabbeting Bit	32-102	1/2"	42
Rounding Over Bit	34-124	1/2"	24
Roman Ogee Bit	38-106	1/2"	28
Chamfer Bit	40-114	1/2"	34
Bearing Flush Trim Bit	42-110	1/2"	11

70

# Three Piece Vertical Raised Panel Bit Sets



97-604

- Combines our most popular rail and stile bits with a vertical ogee raised panel bit.
- Designed for use with a 1/2" shank table-mounted router with 3/4" stock.
- All bits have 1/2" shanks.
- Includes attractive wooden storage box.

### Application:

- Cuts all composition materials, plywood, hardwood, and soft wood.
- Use on 1/2" shank table-mounted portable routers.

### Item Number 97-504

Bit Type	Item Number	Shank Dia.	Page Number
Rail & Stile Bit Set	99-260	1/2"	56
Vertical Raised Panel Bit	99-320	1/2"	62

### Item Number 97-604

Bit Type	Item Number	Shank Dia.	Page Number
Rail & Stile Bit Set	99-261	1/2"	56
Vertical Raised Panel Bit	99-320	1/2"	62

New Storage Box



# Three Piece Cabinet Bit Sets

- Combines our most popular rail and stile bits with a 3/2" diameter traditional raised panel bit.
- Designed for use with a 1/2" shank table-mounted router with 3/4" stock.
- All bits have 1/2" shanks.
- Includes attractive wooden storage box.



97-204



## Application:

- Cuts all composition materials, plywood, hardwood, and soft wood.
- Use on 1/2" shank table-mounted portable routers.

## Item Number 97-100

Bit Type	Item Number	Shank Dia.	Page Number
Rail & Stile Bit Set	99-260	1/2"	56
2 + 2 Raised Panel Bit	99-515	1/2"	60

## Item Number 97-102

Bit Type	Item Number	Shank Dia.	Page Number
Rail & Stile Bit Set	99-260	1/2"	56
2 + 2 Raised Panel Bit	99-518	1/2"	60

## Item Number 97-104

Bit Type	Item Number	Shank Dia.	Page Number
Rail & Stile Bit Set	99-260	1/2"	56
2 + 2 Raised Panel Bit	99-520	1/2"	60

## Item Number 97-200

Bit Type	Item Number	Shank Dia.	Page Number
Rail & Stile Bit Set	99-261	1/2"	56
2 + 2 Raised Panel Bit	99-515	1/2"	60

## Item Number 97-202

Bit Type	Item Number	Shank Dia.	Page Number
Rail & Stile Bit Set	99-261	1/2"	56
2 + 2 Raised Panel Bit	99-518	1/2"	60

## Item Number 97-204

Bit Type	Item Number	Shank Dia.	Page Number
Rail & Stile Bit Set	99-261	1/2"	56
2 + 2 Raised Panel Bit	99-520	1/2"	60

## Item Number 97-226

Bit Type	Item Number	Shank Dia.	Page Number
Rail & Stile Bit Set	99-261	1/2"	56
2 + 2 Raised Panel Bit	99-513	1/2"	60

## Cabinet Bit Sets with Backcutters

### Item Number 97-106

Bit Type	Item Number	Shank Dia.	Page Number
Rail & Stile Bit Set	99-260	1/2"	56
2 + 2 Raised Panel Bit with Backcutter	99-566	1/2"	61

NEW

### Item Number 97-108

Bit Type	Item Number	Shank Dia.	Page Number
Rail & Stile Bit Set	99-260	1/2"	56
2 + 2 Raised Panel Bit with Backcutter	99-569	1/2"	61

NEW

### Item Number 97-208

Bit Type	Item Number	Shank Dia.	Page Number
Rail & Stile Bit Set	99-261	1/2"	56
2 + 2 Raised Panel Bit with Backcutter	99-569	1/2"	61

NEW

### Item Number 97-210

Bit Type	Item Number	Shank Dia.	Page Number
Rail & Stile Bit Set	99-261	1/2"	56
2 + 2 Raised Panel Bit with Backcutter	99-571	1/2"	61

NEW

### Item Number 97-904

Bit Type	Item Number	Shank Dia.	Page Number
Mini Rail & Stile Bit Set	99-266	1/2"	56
Mini 2 + 2 Raised Panel Bit w/Backcutter	99-500	1/2"	61

NEW



# Advanced Cabinet Door Set



95-200

- Create cabinet doors and drawers at a fraction of the cost of shaper heads.
- Similar to Freud's 94-100 plus a Drawer Lock Bit to produce a strong joint for cabinet drawers.
- Designed for use with a 1/2" shank table-mounted router with 3/4" stock.
- All bits have 1/2" shanks.
- Includes attractive wooden storage box.

### Application:

- Cuts all composition materials, plywood, hardwood, and soft wood.
- Use on 1/2" shank table-mounted portable routers.

### Item Number 95-200

Bit Type	Item Number	Shank Dia.	Page Number
Reversible Glue Joint Bit	99-031	1/2"	47
2 + 2 Raised Panel Bit	99-510	1/2"	60
Drawer Lock Bit	99-240	1/2"	49
Rail & Stile Bit Set	99-260	1/2"	56

# Five Piece Cabinet Bit Set



94-100

- Produce your own cabinet doors at a fraction of the cost of shaper heads.
- Designed for use with a 1/2" shank table-mounted router with 3/4" stock.
- All bits have 1/2" shanks.
- Includes attractive wooden storage box.

### Application:

- Cuts all composition materials, plywood, hardwood, and soft wood.
- Use on 1/2" shank table-mounted portable routers.

### Item Number 94-100

Bit Type	Item Number	Shank Dia.	Page Number
Door Lip Bit	99-001	1/2"	63
2 + 2 Raised Panel Bit	99-510	1/2"	60
Reversible Glue Joint Bit	99-031	1/2"	47
Rail & Stile Bit Set	99-260	1/2"	56



# Five Piece Cabinet & Moulding Bit Set



95-100

- Produce your own cabinet doors and more than 39 moulding patterns.
- Designed for use with a 1/2" shank table-mounted router with 3/4" stock.
- All bits have 1/2" shanks.
- Includes attractive wooden storage box.

### Application:

- Cuts all composition materials, plywood, hardwood, and soft wood.
- Use on 1/2" shank table-mounted portable routers.

### Item Number 95-100

Bit Type	Item Number	Shank Dia.	Page Number
Reversible Glue Joint Bit	99-031	1/2"	47
2 + 2 Raised Panel Bit	99-510	1/2"	60
Multi-Profile Bit	99-PK1	1/2"	39
Rail & Stile Bit Set	99-260	1/2"	56

# Nine Piece Table Making Set

- Includes a variety of bits ideal for creating tables.
- All bits have 1/2" shanks.
- Includes attractive wooden storage box.



93-100

## Application:

- Cuts all composition materials, plywood, hardwood, and soft wood.
- Use on hand-held and table-mounted portable routers.

## Item Number 93-100

Bit Type	Item Number	Shank Dia.	Page Number
Bearing Flush Trim Bit	42-110	1/2"	11
Round Nose Bit	18-116	1/2"	17
Drawer Lock Bit	99-240	1/2"	49
Reversible Glue Joint Bit	99-031	1/2"	47
Rounding Over Bit	34-126	1/2"	24
Face Moulding Bit	99-013	1/2"	38
Table Edge Bit	99-027	1/2"	36
Double Flute Straight Bit	12-122	1/2"	5
Cove Bit	30-114	1/2"	22

# Eight Piece Bit Sets for Inkra Jig®



96-102

73

- Create dovetail and box joints by combining these bit sets with your table-mounted router equipped with an Inkra Jig®
- Follow the directions in the Inkra Jig manual and use the correct bit number for the joint you want to create.
- Both sets produce identical profiles.
- Bits in 96-100 have 1/4" shanks, and bits in 96-102 have 1/2" shanks.
- Includes attractive wooden storage box.

## Application:

- Cuts all composition materials, plywood, hardwood, and soft wood.
- Use on table-mounted portable routers equipped with Inkra Jig.
- Can also be used with other joint making jigs or fence systems.

## Item Number 96-100 (8 pc. 1/4" Shank Set)

Bit Type	Dia.	Item Number	Shank Dia.	Page #
Double Flute Straight Bit*	1/4"	04-106	1/4"	5
Double Flute Straight Bit	3/8"	04-124	1/4"	5
Dovetail Bit*	1/4"	22-100	1/4"	41
Dovetail Bit	5/16"	22-101	1/4"	41
Dovetail Bit	3/8"	22-102	1/4"	41
Dovetail Bit	1/2"	22-104	1/4"	41
Dovetail Bit	5/8"	22-105	1/4"	41
Dovetail Bit	3/4"	22-106	1/4"	41

## Item Number 96-102 (8 pc. 1/2" Shank Set)

Bit Type	Dia.	Item Number	Shank Dia.	Page #
Double Flute Straight Bit	1/4"	12-100	1/2"	5
Double Flute Straight Bit	3/8"	12-108	1/2"	5
Dovetail Bit*	1/4"	22-107	1/2"	41
Dovetail Bit	5/16"	22-108	1/2"	41
Dovetail Bit	3/8"	22-110	1/2"	41
Dovetail Bit	1/2"	22-112	1/2"	41
Dovetail Bit	5/8"	22-113	1/2"	41
Dovetail Bit	3/4"	22-114	1/2"	41

\*Solid Carbide

Inkra Jig® is a Registered Trademark of Taylor Design Group

# Three Piece Cove Bit Sets



89-500

- Includes 1/4", 3/8" and 1/2" radius cove bits and attractive wooden storage box.
- Produces classical decorative edge on furniture and mouldings.

**Application:**

- Cuts all composition materials, plywood, hardwood, and soft wood.
- Use on hand-held and table-mounted portable routers.

**Item Number 89-500 (3 pc. 1/4" Shank Set)**

Bit Type	Dia.	Item Number	Shank Dia.	Page Number
Cove Bit	3/8"	30-102	1/4"	22
Cove Bit	1 1/4"	30-104	1/4"	22
Cove Bit	1 1/2"	30-106	1/4"	22

**Item Number 89-550 (3 pc. 1/2" Shank Set)**

Bit Type	Dia.	Item Number	Shank Dia.	Page Number
Cove Bit	1"	30-110	1/2"	22
Cove Bit	1 1/4"	30-112	1/2"	22
Cove Bit	1 1/2"	30-114	1/2"	22

# Three Piece Round Over/Beading Bit Sets

74



89-150

- Includes three rounding over bits, 3/8" bearing and attractive wooden storage box.
- 3/8" bearing will convert all three bits to beading bits for the ultimate in value.
- Rounding over bits soften the edges of fine furniture.
- Beading bits produce a simple, decorative edge on furniture and mouldings.

**Application:**

- Cuts all composition materials, plywood, hardwood, and soft wood.
- Use on hand-held and table-mounted portable routers.

**Item Number 89-100 (3 pc. 1/4" Shank Set)**

Bit Type	Dia.	Item Number	Shank Dia.	Page #
Rounding Over Bit	3/8"	34-108	1/4"	24
Rounding Over Bit	1 1/4"	34-114	1/4"	24
Rounding Over Bit	1 1/2"	34-116	1/4"	24

**Item Number 89-150 (3 pc. 1/2" Shank Set)**

Bit Type	Dia.	Item Number	Shank Dia.	Page #
Rounding Over Bit	3/8"	34-120	1/2"	24
Rounding Over Bit	1 1/4"	34-124	1/2"	24
Rounding Over Bit	1 1/2"	34-126	1/2"	24

**New Shadow Box**

# Five Piece Round Over/ Beading Bit Sets

- Includes five rounding over bits,  $\frac{3}{8}$ " bearing and attractive wooden storage box.
- $\frac{3}{8}$ " bearing will convert all five bits to beading bits for the ultimate in value.
- Rounding over bits soften the edges of fine furniture.
- Beading bits produce a simple, decorative edge on furniture and mouldings.



89-102

## Application:

- Cuts all composition materials, plywood, hardwood, and soft wood.
- Use on hand-held and table-mounted portable routers.

### Item Number 89-102 (5 pc. $\frac{1}{4}$ " Shank Set)

Bit Type	Dia.	Item Number	Shank Dia.	Page #
Rounding Over Bit	$\frac{3}{4}$ "	34-104	$\frac{1}{4}$ "	24
Rounding Over Bit	$\frac{7}{8}$ "	34-108	$\frac{1}{4}$ "	24
Rounding Over Bit	1"	34-110	$\frac{1}{4}$ "	24
Rounding Over Bit	$1\frac{1}{4}$ "	34-114	$\frac{1}{4}$ "	24
Rounding Over Bit	$1\frac{1}{2}$ "	34-116	$\frac{1}{4}$ "	24

### Item Number 89-152 (5 pc. $\frac{1}{2}$ " Shank Set)

Bit Type	Dia.	Item Number	Shank Dia.	Page #
Rounding Over Bit	$\frac{3}{4}$ "	34-118	$\frac{1}{2}$ "	24
Rounding Over Bit	1"	34-120	$\frac{1}{2}$ "	24
Rounding Over Bit	$1\frac{1}{4}$ "	34-124	$\frac{1}{2}$ "	24
Rounding Over Bit	$1\frac{1}{2}$ "	34-126	$\frac{1}{2}$ "	24
Rounding Over Bit	2"	34-128	$\frac{1}{2}$ "	24

75

# Six Piece Slot Cutter Sets

- Includes four three-wing slot cutters ( $\frac{1}{16}$ ",  $\frac{1}{8}$ ",  $\frac{5}{32}$ " and  $\frac{1}{4}$ " kerf), a ball bearing (62-108) to provide a  $\frac{3}{16}$ " depth of cut, an arbor and an attractive wooden storage box.
- Slotting cutters produce precision slots for T mouldings, spline joints and many other applications.

## Application:

- Cuts all composition materials, plywood, hardwood, and soft wood.
- Use on hand-held and table-mounted portable routers.
- 56-109 can be used for biscuit joining.



89-300

### Item Number 89-300 (6 pc. $\frac{1}{4}$ " Shank Set)

Bit Type	Dia.	Item Number	Shank Dia.	Page #
Three Wing Slot Cutter	2"	56-100	$\frac{1}{4}$ "	44
Three Wing Slot Cutter	2"	56-108	$\frac{1}{4}$ "	44
Three Wing Slot Cutter	2"	56-109	$\frac{1}{4}$ "	44
Three Wing Slot Cutter	2"	56-112	$\frac{1}{4}$ "	44
$\frac{1}{4}$ " Arbor		60-100		45
Ball Bearing		62-108		81

### Item Number 89-350 (6 pc. $\frac{1}{2}$ " Shank Set)

Bit Type	Dia.	Item Number	Shank Dia.	Page #
Three Wing Slot Cutter	2"	56-100	$\frac{1}{2}$ "	44
Three Wing Slot Cutter	2"	56-108	$\frac{1}{2}$ "	44
Three Wing Slot Cutter	2"	56-109	$\frac{1}{2}$ "	44
Three Wing Slot Cutter	2"	56-112	$\frac{1}{2}$ "	44
$\frac{1}{2}$ " Arbor		60-102		45
Ball Bearing		62-108		81

# Three Piece Chamfer Bit Set



89-250

- Includes 22½°, 30° and 45° chamfer bits and an attractive wooden storage box.
- Maintains crisp, geometric lines while forming a uniform bevel on the edge of the work piece.
- Adjust chamfer size by changing the height of the bit.

### Application:

- Cuts all composition materials, plywood, hardwood, and soft wood.
- Use on hand-held and table-mounted portable routers.

### Item Number 89-250

Bit Type	Dia.	Item Number	Shank Dia.	Page Number
Chamfer Bit	1¼"	40-101	½"	34
Chamfer Bit	1¾"	40-114	½"	34
Chamfer Bit	1 <sup>11</sup> / <sub>32</sub> "	40-206	½"	34

# Four Piece Chamfer Bit Set



76

89-200

- Includes 15°, 25°, 30° and 45° chamfer bits and an attractive wooden storage box.
- All bits have ¼" shanks.
- Create a uniform bevel on the edge of the work piece to add character while keeping crisp, geometric lines.
- Adjust chamfer size by changing the height of the bit.

### Application:

- Cuts all composition materials, plywood, hardwood, and soft wood.
- Use on hand-held and table-mounted portable routers.

### Item Number 89-200

Bit Type	Dia.	Item Number	Shank Dia.	Page Number
Chamfer Bit	<sup>23</sup> / <sub>32</sub> "	40-100	¼"	34
Chamfer Bit	<sup>15</sup> / <sub>16</sub> "	40-102	¼"	34
Chamfer Bit	1¾"	40-106	¼"	34
Chamfer Bit	1 <sup>11</sup> / <sub>32</sub> "	40-202	¼"	34

# Six Piece Straight Bit Set



91-102



- Allows you to make grooves, dadoes or rabbets.
- Sizes range from ¼" diameter to 1" diameter in ⅛" increments.
- All bits have ½" shanks.
- Includes attractive wooden storage box.

### Application:

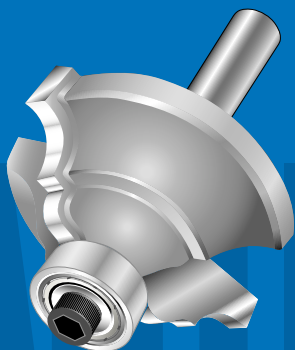
- Cuts all composition materials, plywood, hardwood, and soft wood.
- Use on hand-held and table-mounted portable routers.

### Item Number 91-102

Bit Type	Dia.	Item Number	Shank Dia.	Page #
Double Flute Straight Bit	¼"	12-100	½"	5
Double Flute Straight Bit	<sup>5</sup> / <sub>16</sub> "	12-106	½"	5
Double Flute Straight Bit	½"	12-116	½"	5
Double Flute Straight Bit	<sup>5</sup> / <sub>8</sub> "	12-136	½"	5
Double Flute Straight Bit	<sup>3</sup> / <sub>4</sub> "	12-152	½"	6
Double Flute Straight Bit	1"	12-172	½"	6

# Introducing Avanti™

## Enthusiast Woodworker Router Bit Sets



The new Avanti line of high quality router bit sets are manufactured by Freud with the woodworking enthusiast in mind. Produced using the same superior materials and processes as all Freud router bits, these introductory sets are designed to get woodworkers started in routing at an affordable price without sacrificing quality. This starter set includes an educational video on a mini CD ROM to guide woodworkers through some basic, helpful routing tips and techniques. This set also includes a poster that provides step-by-step instructions on how to create a router bit cabinet as well as a guide to choosing router bits.

77

**freud**  
**AVANTI**

## 4 Piece Introductory Bit Set

- This new Avanti 4 piece set includes a 3/8" Rabbeting bit, a Top Bearing Flush Trim bit, and a 1/4" Rounding Over bit and by changing this bits bearing, it becomes a 1/4" Beading bit.
- Includes an instructional video CD on Routing Tips & Techniques.
- Includes a new attractive wooden storage box.
- All bits have 1/4" shanks.



A90200

### Application:

- Cuts all composition materials, plywood, hardwood, and soft wood.
- Use on hand-held and table-mounted portable routers.



### With The CD Learn How To:

- Create Sliding Dovetails
- Cut Dadoes
- Joint Straight Edges
- Create Decorative Edge Treatments Freehand
- Chamfer Perfectly Accurate Beveled Angles
- And Much More...

### Item Number A90200

Bit Type	Item Number	Shank Dia.
Rabbeting Bit	A32100	1/4"
Rounding Over/Beading Bit	A34110	1/4"
Mortising Bit	A50102	1/4"

NEW

Router Bit Sets

**freud**®

# 5 Piece Introductory Bit Sets



A91210



**Video-CD Included**



A91210



**Video-CD Included**

- These two new Avanti 5 Piece Sets include carbide tipped Round Nose, Rabbeting, Rounding Over, Roman Ogee, and 45 Degrees Chamfer bits in your choice of 1/4" or 1/2" shanks.
- Sets include an instructional video CD on Routing Tips & Techniques.
- All sets come in Freud's unique shadow box case, this set hangs on the wall or mounts on the bench to keep bits handy and safe.

**Application:**

- Cuts all composition materials, plywood, hardwood, and soft wood.
- Use on hand-held and table-mounted portable routers.

**With The CD's Learn How To:**

- Create Sliding Dovetails
- Cut Dadoes
- Joint Straight Edges
- Create Decorative Edge Treatments Freehand
- Chamfer Perfectly Accurate Beveled Angles
- And Much More...



**Item Number A90210 (5 pc. 1/4" Shank Set)**

Bit Type	Item Number	Shank Dia.
Round Nose Bit	A18108	1/4"
Rabbeting Bit	A32100	1/4"
Rounding Over Bit	A34110	1/4"
Roman Ogee Bit	A38100	1/4"
Chamfer Bit	A40104	1/4"



**Item Number A91210 (5 pc. 1/2" Shank Set)**

Bit Type	Item Number	Shank Dia.
Round Nose Bit	A18122	1/2"
Rabbeting Bit	A32102	1/2"
Rounding Over Bit	A34126	1/2"
Roman Ogee Bit	A38106	1/2"
Chamfer Bit	A40114	1/2"



# 15 Piece Introductory Bit Set

- Freud's new Avanti 15 Piece Set includes just about every carbide tipped bit the woodworker needs to get a new shop up to speed. The set includes three straight bits, a pair of rounding over bits, a flush trim, V-Groove, dovetail, rabbeting, and a great assortment of profile bits.
- Includes an instructional video CD on Routing Tips & Techniques.
- Includes a new attractive wooden storage box.
- All bits have 1/2" shanks.



A91220

**Application:**

- Cuts all composition materials, plywood, hardwood, and soft wood.
- Use on hand-held and table-mounted portable routers.

**With The CD Learn How To:**

- Create Sliding Dovetails
- Cut Dadoes
- Joint Straight Edges
- Create Decorative Edge Treatments Freehand
- Chamfer Perfectly Accurate Beveled Angles
- And Much More...



Item Number A91220 <span style="float: right;">NEW</span>		
Bit Type	Item Number	Shank Dia.
Traditional Beading Bit	A80122	1/2"
Chamfer Bit	A40114	1/2"
Dovetail Bit	A22112	1/2"
Rabbeting Bit	A32102	1/2"
Cove Bit	A30114	1/2"
Rounding Over/Beading Bit	A34120	1/2"
Rounding Over/Beading Bit	A34126	1/2"
Roman Ogee Bit	A38106	1/2"
Flush Trim Bit	A42110	1/2"
Straight Trim Bit	A12100	1/2"
Straight Time Bit	A12128	1/2"
Straight Trim Bit	A12156	1/2"
Round nose Bit	A18116	1/2"
"V" Grooving Bit	A20108	1/2"
3/8" Bearing	A62102	

# Bearings & Repair Parts

Designed to last a lifetime, you'll always be satisfied with Freud router bits. To ensure your bits endure through the years, choose from a wide selection of Freud ball bearings, repair parts and replacement parts. We're so confident in our product quality that we guarantee Freud router bits with a Limited Tooling Warranty, outlined in the back of this booklet.

# Ball Bearings

- Freud router bits feature superior quality ball bearings.
- Lubricated with a high temperature lubricant to withstand the stresses of turning at 22,000 RPMs.
- Shielded to keep out the unwanted wood dust and chips that greatly reduce bearing life.

## Application:

- Repairing Freud router bits.
- Altering the profile on a Freud bit.
- Will fit other brands of router bits.

Item Number	Inside Dia.	Bearing Dia.	Bearing Height
<b>Individual Bearings</b>			
62-100	3/8"	3/8"	5/32"
62-102	3/16"	3/8"	1/8"
62-103	1/4"	1/2"	3/16"
62-104	3/16"	1/2"	3/16"
62-105	10mm	19mm	7mm
62-106	1/4"	3/4"	9/32"
62-107	5/16"	7/8"	9/32"
62-108	8mm	22mm	7mm
62-109	15mm	35mm	11mm
62-111	15mm	32mm	9mm
62-112	1/4"	5/8"	3/16"
62-113	3/16"	3/8"	3/16"
62-114	1/2"	1 1/8"	3/16"
62-116	1/2"	1 3/8"	1/16"
62-118	10mm	26mm	8mm
<b>Sleeved Specialty Bearings</b>			
62-110	3/16"	3/4"	1/4"
62-120	5/16"	1"	10mm
62-121	5/16"	1 1/4"	10mm
62-122	5/16"	1 1/2"	10mm
62-124	5/16"	26mm	7mm
62-128	5/16"	30mm	7mm
62-136	17mm	2	10mm
62-139	1/2"	1 1/2"	5/16"
62-144	3/16"	3/4"	12mm
62-146	3/16"	7/8"	12mm
62-148	3/16"	1 1/8"	12mm
62-150	3/16"	1 3/8"	12mm
<b>Packages of Bearings</b>			
62-XXX	Assorted Ball Bearing Set Contains 1 each of: 62-100, 62-102, 62-104, & 62-108		
62-504	Full Bearing Kit for Set 32-502 – 32-526 Contains 1 each of: 62-102, 62-104, 62-106, 62-107, 62-112, 62-114, 62-116		

# Repair Parts

- Freud offers superior quality replacement parts for all Freud bits.
- These parts can be used to replace lost fasteners or to return a bit to its original condition.

## Application:

- Repairing or rebuilding Freud router bits.

Item Number	Description	Outside Dia.	Height	Wrench Size	Inside Dia.
62-303	Cap Screw	3mm	6mm	2.5mm	—
62-304	Long Cap Screw	3mm	12mm	2.5mm	—
62-305	Hex Nut	5/16"-24UNF	1 7/64"	1/2"	—
62-306	Medium Cap Screw	3mm	8mm	2.5mm	—
62-307	Washer	—	—	—	3mm
62-309	Washer	—	—	—	5/16"
62-311	Washer	—	—	—	3/8"
62-313	Washer	—	—	—	1/2"
62-321	Flange Bushing	1/4"	3/16"	—	3/16"
62-323	Flange Bushing	5/16"	1/8"	—	3/16"
62-325	Flange Bushing	1/2"	1/8"	—	3/16"
62-331	Lock Collar	15/32"	5/32"	—	1/4"
62-402	Wrench	—	—	2.5mm	—

# Ball Bearings Reference Guide

Item Number	Bearing Number	Item Number	Bearing Number	Item Number	Bearing Number
16-500	62-103	34-114	62-104	38-262	62-102
16-502	62-112	34-116	62-104	38-270	62-104
16-504	62-105	34-117	62-104	38-280	62-104
16-510	62-105	34-118	62-104	38-282	62-104
16-522	62-142	34-119	62-104	38-302	62-102
16-523	62-142	34-120	62-104	38-304	62-102
16-524	62-142	34-122	62-104	38-312	62-102
18-508	62-103	34-124	62-104	38-314	62-102
18-510	62-112	34-126	62-104	38-352	62-104
18-512	62-106	34-127	62-104	38-362	62-104
19-506	62-106	34-128	62-104	38-402	62-104
19-578	62-114	34-130	62-104	38-452	62-102
20-574	62-114	34-132	62-104	38-502	62-104
20-502	62-103	34-134	62-104	38-504	62-104
22-505	62-112	34-136	62-104	38-522	62-102
22-506	62-105	34-138	62-104	38-524	62-104
22-507	62-105	34-140	62-104	38-602	62-102
30-094	62-102	36-100	62-102	38-612	62-104
30-098	62-102	36-104	62-102	38-614	62-104
30-100	62-102	36-106	62-102	38-622	62-102
30-102	62-102	36-108	62-102	38-632	62-102
30-103	62-104	36-110	62-102	39-502	62-105
30-104	62-104	36-112	62-102	39-504	62-130
30-106	62-104	36-114	62-102	39-506	62-132
30-107	62-104	36-116	62-102	39-512	62-105
30-108	62-104	36-117	62-102	39-514	62-130
30-109	62-104	36-118	62-102	39-516	62-132
30-110	62-104	36-119	62-102	39-522	62-105
30-111	62-104	36-120	62-102	39-524	62-130
30-112	62-104	36-122	62-102	39-526	62-132
30-114	62-104	36-124	62-102	39-532	62-105
30-202	62-104	36-126	62-102	39-534	62-130
32-096	62-104	36-127	62-102	39-536	62-132
32-098	62-104	36-128	62-102	39-578	62-140
32-100	62-104	36-130	62-102	39-580	62-139
32-101	62-102	36-132	62-102	40-094	62-104
32-102	62-104	36-134	62-102	40-098	62-104
32-106	62-102	36-136	62-102	40-100	62-104
32-110	62-102	36-138	62-102	40-101	62-104
32-502	62-502	36-140	62-102	40-102	62-104
32-504	62-504	38-100	62-102	40-104	62-104
32-522	62-502	38-102	62-102	40-106	62-104
32-524	62-504	38-104	62-102	40-114	62-104
33-106	62-104	38-106	62-102	40-118	62-104
33-116	62-104	38-152	62-104	40-202	62-104
34-100	62-104	38-154	62-104	40-206	62-104
34-104	62-104	38-202	62-102	41-102	62-104
34-106	62-104	38-204	62-102	41-104	62-104
34-108	62-104	38-250	62-102	41-106	62-104
34-110	62-104	38-252	62-102	41-108	62-102
34-112	62-104	38-260	62-102	41-110	62-104

# Ball Bearings Reference Guide

Item Number	Bearing Number	Item Number	Bearing Number	Item Number	Bearing Number
41-402	62-112	63-160	62-108	99-015	62-104
42-080	62-108	63-161	62-108	99-016	62-104
42-090	62-106	63-162	62-108	99-020	62-104
42-100	62-102	80-102	62-104	99-021	62-104
42-102	62-102	80-104	62-104	99-022	64-104
42-104	62-104	80-106	62-104	99-023	62-108
42-106	62-104	80-108	62-104	99-024	62-108
42-108	62-104	80-122	62-104	99-025	62-108
42-109	62-104	80-124	62-104	99-027	62-104
42-110	62-104	80-126	62-104	99-028	62-114
42-114	62-104	80-128	62-104	99-029	62-108
42-116	62-104	80-130	62-104	99-030	62-108
42-118	62-106	80-552	62-112	99-035	62-108
43-106	62-106	80-558	62-106	99-039	62-109
43-108	62-106	80-564	62-106	99-041	62-108
43-128	62-106	80-572	62-112	99-041	62-124
43-204	62-106	80-578	62-106	99-041	62-128
43-208	62-106	80-584	62-106	99-044	62-104
43-212	62-106	82-510	62-112	99-051	62-108
43-216	62-106	82-512	62-112	99-060	62-104
44-100	62-104	82-514	62-106	99-061	62-104
44-102	62-104	82-515	62-106	99-062	62-104
44-104	62-104	84-106	62-112	99-066	62-104
44-108	62-104	84-126	62-112	99-250	62-108
45-502	62-132	85-001	62-110	99-251	62-108
45-522	62-132	85-003	62-110	99-253	62-108
48-102	62-104	85-005	62-110	99-260	62-108
48-112	62-104	85-007	62-110	99-261	62-108
50-101	62-103	85-009	62-110	99-263	62-108
50-102	62-103	85-011	62-106	99-442	62-112
50-103	62-112	85-013	62-106	99-444	62-112
50-104	62-112	85-015	62-106	99-446	62-104
50-106	62-105	85-017	62-112	99-450	62-104
50-122	62-114	85-019	62-104	99-452	62-104
50-126	62-110	85-021	62-106	99-510	62-104
50-130	62-139	85-023	62-112	99-511	62-104
50-138	62-136	85-025	62-104	99-512	62-104
60-120	62-108	85-027	62-106	99-513	62-104
60-122	62-108	85-029	62-112	99-515	62-104
63-100	62-108	85-031	62-104	99-516	62-104
63-104	62-108	99-002	62-104	99-518	62-104
63-108	62-108	99-003	62-102	99-519	62-104
63-109	62-108	99-005	62-104	99-520	62-104
63-110	62-108	99-006	62-104	99-521	62-104
63-111	62-108	99-008	62-104	99-522	62-104
63-112	62-108	99-009	62-102	99-523	62-104
63-150	62-108	99-010	62-104	99-PKJ	62-104
63-154	62-108	99-011	62-104	99-PK1	62-104
63-156	62-108	99-012	62-104		
63-158	62-108	99-013	62-104		
63-159	62-108	99-014	62-104		